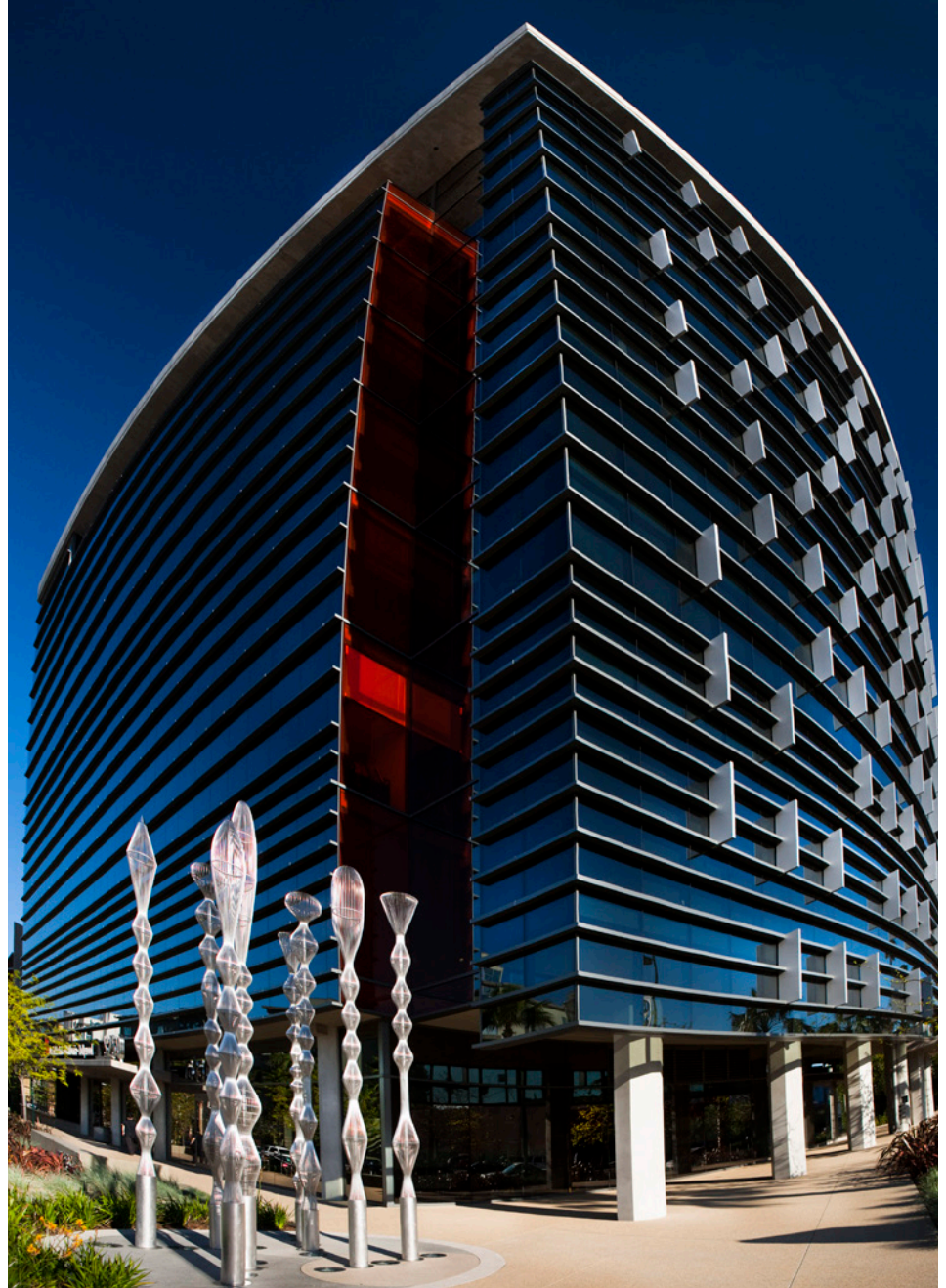
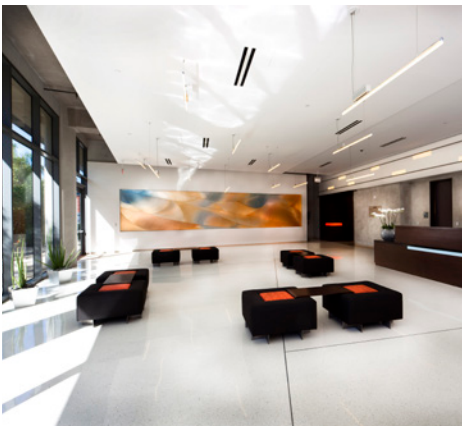


LOCATION NORTH HOLLYWOOD, CALIFORNIA
CLIENT J. H. SNYDER CO.

NOHO



PROJECT TYPE OFFICE BUILDING (9 STORIES)
TYPE 1 CONCRETE

SIZE 180,000 S.F. (6-STORY PARKING GARAGE)

GREEN STRATEGIES 25% MORE EFFICIENT THAN TITLE 24
DAY LIGHTING FOR ALL OFFICES
RECYCLED CONCRETE MATERIALS
RECYCLED CONSTRUCTION WASTE
REDUCED WATER USE

J.H.Snyder's program was for a class A office building to draw tenants to the growing Arts Community of North Hollywood.

The structure features floor to ceiling glass curtain walls, exposed concrete walls and ceilings and a 6-story parking garage. Site amenities include showers for bicycle riders, high-efficiency HVAC systems, access to a Metro transit station and local retail within walking distance.