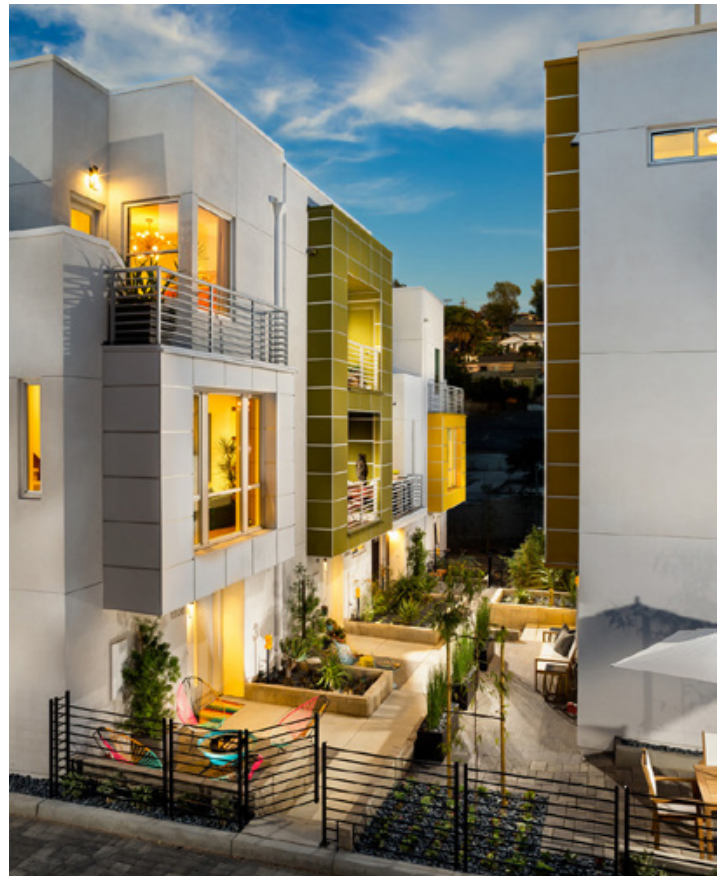


LOCATION SILVERLAKE, CA
CLIENT TRUMARK HOMES

SL70



PROJECT TYPE	SINGLE-FAMILY DETACHED
SIZE	70 UNITS UNIT SIZE: 1,219 S.F. - 1,469 S.F.
DENSITY	29 DU/AC
AWARDS	2015 NAHB GOLD AWARD "DETACHED COMMUNITY OF THE YEAR" 2015 GOLD NUGGETS "BEST SINGLE-FAMILY DETACHED HOME UNDER 2,000 SQ.FT."

Designed under the small lot ordinance of L.A., this urban infill project is part of a recent re-development in Silver Lake. This 2.34 acre development hosts 70 Luxury homes designed with a contemporary look that reflects the young and dynamic urban lifestyle. The five plans includes side-by-side garages and a modern home office located on the first level. The expansive Great Room with its 10' ceiling is located on the second floor level, boasting large kitchen islands and an open staircase. An exterior staircase leads up to the open roof decks that are ideal for barbecuing and entertaining.