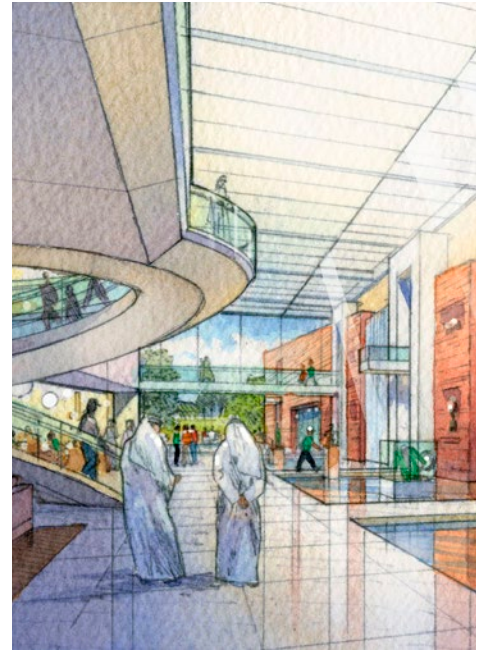


LOCATION ABU DHABI, UAE  
CLIENT TDIC

JZMK  
PARTNERS

# SAADIYAT BEACH GOLF CLUBHOUSE



**PROJECT TYPE**  
**SIZE**

CLUBHOUSE  
LAND AREA: 49,250M<sup>2</sup>  
BUILDING AREA: 17,325M<sup>2</sup>

With over three km of white sand beach, protected sand dunes, and a signature Gary Player Golf Course, this 6-star Golf Clubhouse & Boutique Hotel will be located in Saadiyat Beach. The proposed building orients to the sea, addressing all four of its surrounding sides. The ground floor is set approximately 5 meters above the surrounding golf course, giving the Clubhouse commanding views in all directions. With careful attention to the topography, landscape and gentle slopes ease the transition between the Clubhouse and the golf course, enhancing the landmark building.