

**EXPERIENCE** PROTOTYPES

**J Z M K**  
P A R T N E R S

714.426.6900

3080 Bristol Street, Suite 650  
Costa Mesa, CA 92626

[www.jzmkpartners.com](http://www.jzmkpartners.com)

## 55+ COURTYARD PROTOTYPE



**PROJECT TYPE**

SENIOR, SINGLE-FAMILY DETACHED

**SIZE**

HOME SIZES: 2,025 - 2,225 SF

**DENSITY**

5.6 DU/AC

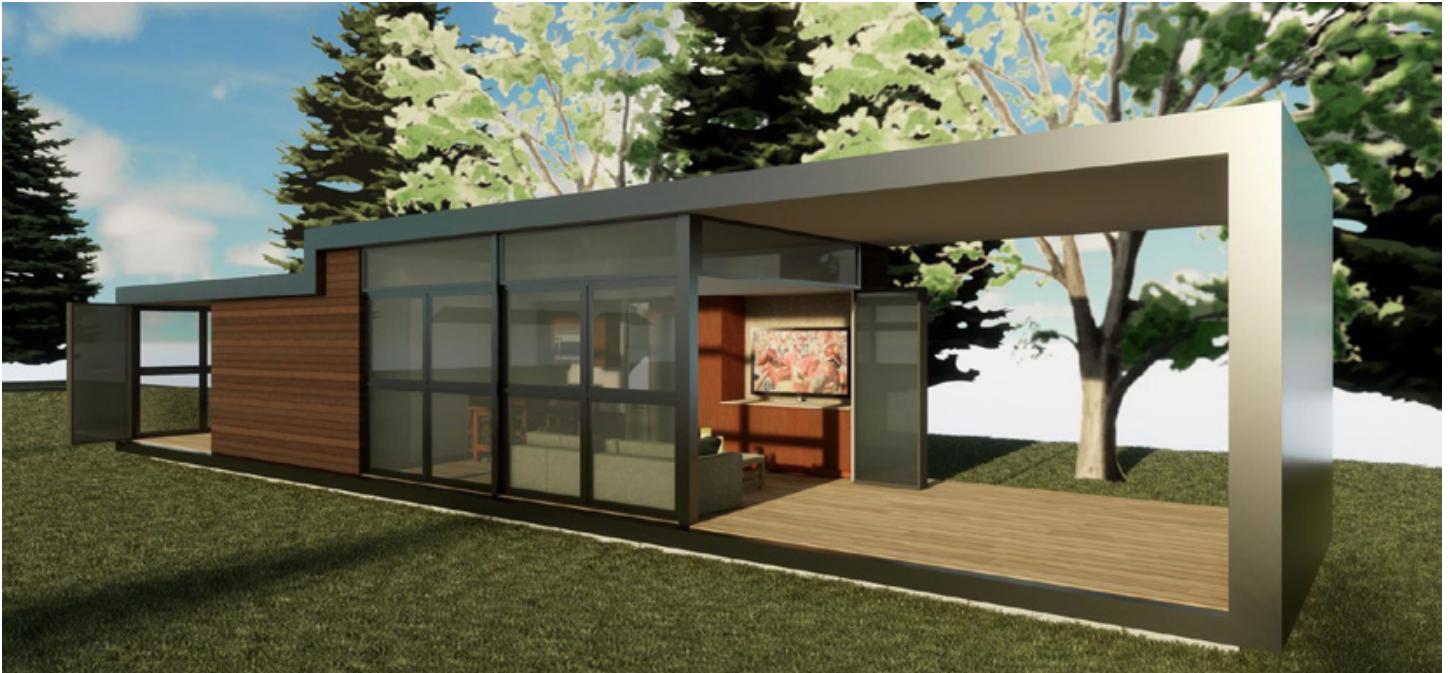
JZMK has developed a new concept in senior housing that turns traditional single-family housing design inside-out. The concept evolved out of research based on the today's 55+ demographic. This group of people Largely prefer single-family homes between 2,000 SF and 2,500 SF on a single story, and 81% would prefer a wide shallow plan over a conventional layout. Additionally, 89% will consider a smaller backyard if it is designed as a great outdoor space, consumers' top preferred backyard style was a covered outdoor room with a fireplace.



LOCATION ANYWHERE, USA  
CLIENT VARIOUS

JZMK  
PARTNERS

# JZMK MODULAR HOMES



**PROJECT TYPE** MODULAR | PREFABRICATED | SINGLE-FAMILY  
VACATION/RESORT HOME | RENTAL PROPERTY  
ACCESSORY DWELLING UNIT

**SIZE** SCALABLE

JZMK Partners is bringing home building into the 21st Century with JZMK Modular Homes. By utilizing the most current and precise manufacturing techniques, we are able to deliver consistent high end modern design at an affordable price. We have several base plans that can be configured with options such as additional bedrooms, or in some cases, a second story.

Stay tuned – plans, pricing and details coming soon!



# MICRO-UNIT PROTOTYPE



PROJECT TYPE	PREFABRICATED TYPE III OVER TYPE I PODIUM MIXED-USE
SIZE	SITE SCALABLE FROM .25 ACRES AND UP
DENSITY	UP TO 200 DU/AC

JZMK Partners has designed a new Urban Multifamily Mixed-Use prototype that achieves an astounding 200 units per acre without the use of a subterranean parking garage, on a very small footprint as little as one quarter acre. The new concept includes building amenities, is composed of one and two bedroom residential units and is fully parked with mechanized parking within the building footprint. Corner and liner retail at street level reinforce the urban fabric.



# TRIPLEX PROTOTYPE



**PROJECT TYPE**

TOWNHOMES

**SIZE**

SITE AREA: SCALABLE

SQUARE FOOTAGE: 833 SF-1,352 SF

**DENSITY**

22 DU/AC

The Triplex Single Family Attached Prototype has been design with affordability and livability in mind. The product plots at 22 DU/AC and includes an equal mix of 1, 2 and 3 bedroom 2-story townhomes. Square footages range from 833 SF-1,352 SF. The site is parked at 2.83 Spaces/Unit. The modest sized homes benefit greatly from open floorplans. Additionally, The living spaces open up to generous sized decks, Maximizing the available indoor and outdoor space for everyday living as well as entertaining.