

EXPERIENCE RECREATION

J Z M K
P A R T N E R S

714.426.6900

3080 Bristol Street, Suite 650
Costa Mesa, CA 92626

www.jzmkpartners.com

LOCATION HAWTHORNE, CALIFORNIA
CLIENT WILLIAM LYON HOMES

JZMK
PARTNERS

360° COMMUNITY CENTER



PROJECT TYPE RECREATION CENTER
SIZE 10,371 SF

The 360° Community Center was designed as the heart of the 360° community. Within the pedestrian-friendly neighborhood, residents can enjoy the large central urban green and resort-style recreation club. Comprised of 3 buildings, the central recreational space offers, offices, workout facilities, entertainment rooms, and outdoor recreation courts and gathering spaces for entertaining.

LOCATION ONTARIO, CALIFORNIA
CLIENT BROOKFIELD RESIDENTIAL

JZMK
PARTNERS

EDENGLLEN RECREATION CENTER



PROJECT TYPE	RECREATION CENTER
SIZE	SITE AREA: 3,090 SF
AMENITIES	CLUBHOUSE POOL & SPA POOL HOUSE ENTERTAINING & BBQ AREAS TOT LOTS BASKETBALL COURTS

Envisioned as a community where “way back when” meets today, Edenglen promises to enrich the lives of its residents with the simplicity of a bygone era – a time when neighbors enjoyed impromptu chats on the front porch or exchanged hello’s in the park while children delighted in playing tag nearby. Edenglen’s design will capture the intimacy and spirit of the small towns of yesteryear with inviting front porches, brick-lined streets, wide parkways, inviting gathering spots and a central town green.

LOCATION SANTA CLARITA, CALIFORNIA
CLIENT BROOKFIELD RESIDENTIAL

JZMK
PARTNERS

FIVE KNOLLS RECREATION CENTER



PROJECT TYPE CLUBHOUSE
SIZE INTERIOR SPACE: 2,203 SF
COVERED EXTERIOR SPACE: 1,148

The Club at Five Knolls was designed as the central recreational hub within the Five Knolls community in Santa Clarita, CA. It sits at the intersection of the main community entrance roads and it's tower form is the identifying icon element upon entrance into the community. The concept is reminiscent of a contemporary mid-century Ranch Style aesthetic. The main entrance focuses upon the pool area through an entry arbor that splits the building form into separate use areas.

LOCATION CORONA, CA
CLIENT THE NEW HOME COMPANY

JZMK
PARTNERS

HUDSON HOUSE



PROJECT TYPE CLUBHOUSE
SIZE 6,030

The Hudson House Clubhouse at Bedford in South Corona will serve as the community's social epicenter, bringing neighbors together with experiences for the whole family to enjoy. The Clubhouse is off of the central courtyard, you enter through sliding barn doors and features an expansive multipurpose room complete with fireplace, lounge area, bar

and catering kitchen. Walk through the great room onto the veranda that overlooks the lawn adjacent to the adult and kids pool.

The courtyard is surrounded by 2 additional outdoor gathering spaces. The main outdoor lounge includes a bar complete with TV, fireplace and prep area that's located adjacent to the bocce court. The secondary outdoor lounge area is complete with fire pits, a picnic area and a lookout bar.

LOCATION SIDI ABDEL RAHMAN, EGYPT

CLIENT EMAAR EGYPT

JZMK
PARTNERS

MARASSI BEACH CLUBHOUSE



PROJECT TYPE	BEACH CLUBHOUSE BUILDING TYPE 1 CONCRETE
SIZE	99,940 SF (2.30 ACRES)
CONST. COST	\$31 MILLION USD
AWARD	2011 GOLD NUGGET "GRAND AWARD INTERNATIONAL COMMERCIAL"

Sited on the North Mediterranean Sea in Sidi Abdel Rahman, Egypt, the Marassi Beach Club provides a premier lifestyle and recreational amenity to help define the Marassi Resort master planned community as a luxury destination resort. The building is entered into perpendicular to a focal arcade that frames the view to the sea setting up a dramatic sequence of experiential events as you pass through the view portal and down the ceremonial stairs to the lower terrace and beach areas beyond.

LOCATION AUSTIN, TEXAS
CLIENT CANYON RIDGE DEVELOPMENT

JZMK
PARTNERS

THE HILLSIDE CLUBHOUSE



PROJECT TYPE CLUBHOUSE

Nestled comfortably into the Texas Hill Country of West Austin. The Hillside Clubhouse boasts a community pool and cabana area completely finished with local limestone. Adjacent to the masonry fireplace and B.B.Q. area, the pool and spa feature a contemporary zero edge and water fall.

Sitting along a high bluff and surrounded by more than 24,000 acres of lush nature preserve, The Hillside Clubhouse blends natural elements with modern character.

LOCATION RANCHO MISSION VIEJO, CALIFORNIA

CLIENT RANCHO MISSION VIEJO

THE OUTPOST



PROJECT TYPE
KEY AMENITIES

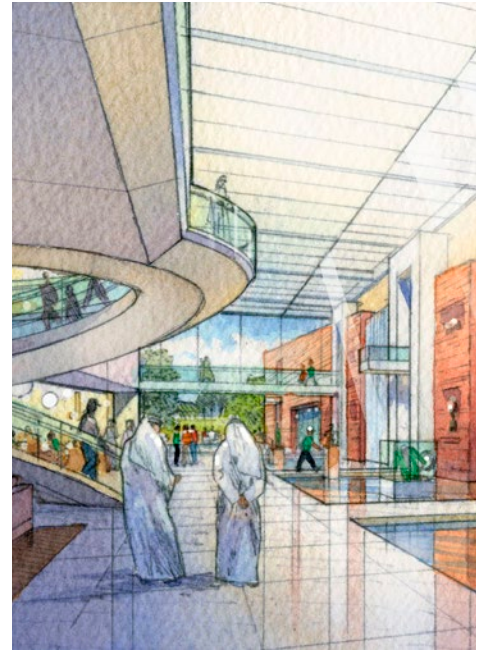
RECREATIONAL BUILDING
EVENT ROOM: 1,272 SF | OUTDOOR DINING
PRIVATE EVENT SPACE | HAMMOCK GARDEN
BOCCE BALL COURTS | POOLSIDE CABANAS
FIREPITS | OUTDOOR BAR | CATERING KITCHEN
SALT WATER POOL & SPA

Rancho Mission Viejo's new ranching oasis, The Outpost, has all the amenities you'll enjoy in Sendero's larger clubhouses, but it also has a true charm that lets guests reconnect with nature while enjoying all the best The Ranch has to offer. Removed from the main village and situated off of Cow Camp Road, The Outpost is surrounded by beautiful, rolling hills and scenic vistas that offer serenity and peace of mind.

LOCATION ABU DHABI, UAE
CLIENT TDIC

JZMK
PARTNERS

SAADIYAT BEACH GOLF CLUBHOUSE



PROJECT TYPE
SIZE

CLUBHOUSE
LAND AREA: 49,250M²
BUILDING AREA: 17,325M²

With over three km of white sand beach, protected sand dunes, and a signature Gary Player Golf Course, this 6-star Golf Clubhouse & Boutique Hotel will be located in Saadiyat Beach. The proposed building orients to the sea, addressing all four of its surrounding sides. The ground floor is set approximately 5 meters above the surrounding golf course, giving the Clubhouse commanding views in all directions. With careful attention to the topography, landscape and gentle slopes ease the transition between the Clubhouse and the golf course, enhancing the landmark building.

LOCATION ABU DHABI, UNITED ARAB EMIRATES
CLIENT TOURISM DEVELOPMENT & INVESTMENT CO. (TDIC)

JZMK
PARTNERS

SAADIYAT GOLF ACADEMY



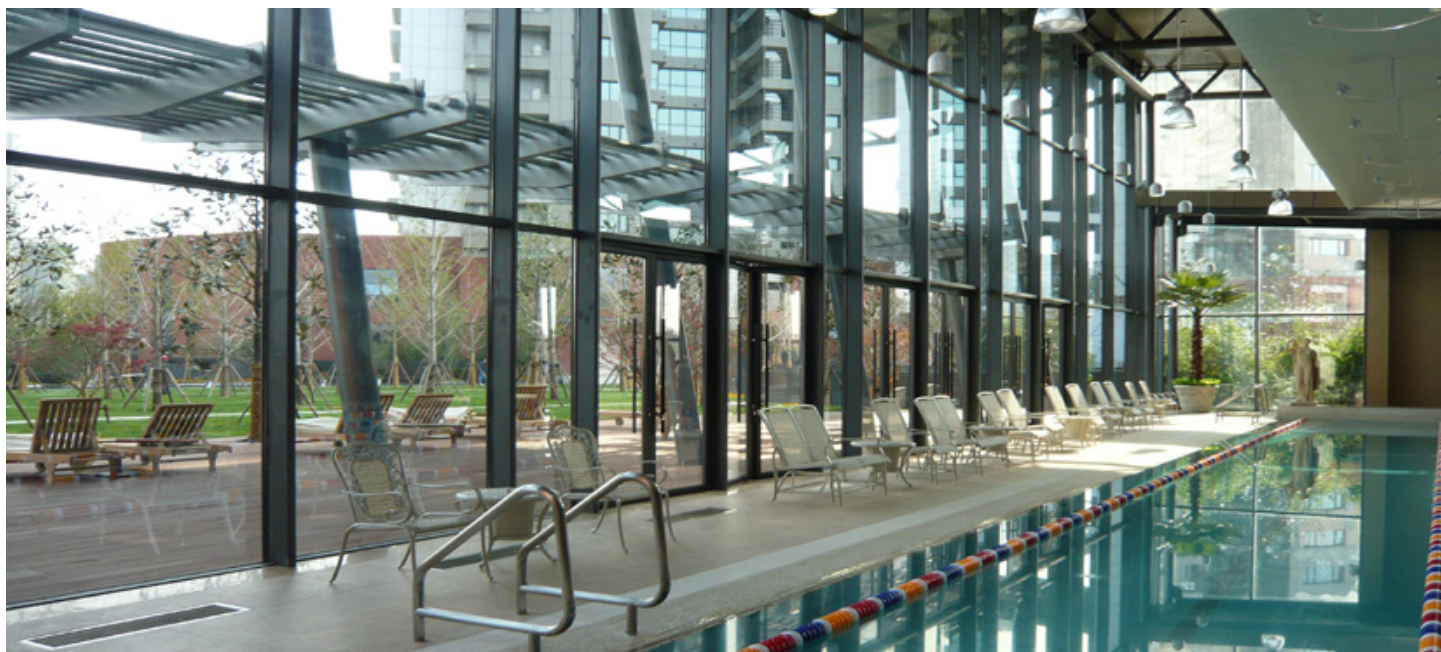
PROJECT TYPE GOLF ACADEMY
SIZE BUILDING AREA: 2,780 SM

With over three kilometers of white sand beach, protected sand dunes, and a signature Gary Player golf course, this Golf Academy is located in Saadiyat Beach, the premier district of Saadiyat Island. This facility is designed to be a teaching academy to play golf and will also function as a temporary Golf Clubhouse. The Golf Clubhouse completed construction in 2011 and is now open. Guests and visitors of the Saadiyat Beach Golf Academy are presented with a coordinated and artfully composed landscape setting.

LOCATION HEXI DISTRICT, NANJING, CHINA
CLIENT YANLORD INVESTMENT / NANJING CO. LTD.

JZMK
PARTNERS

YANLORD CLUBHOUSE



PROJECT TYPE HOSPITALITY / RECREATIONAL FACILITY
SIZE 13,600 SF
AWARDS GOLD NUGGET AWARD
"INTERNATIONAL SITE PLAN"
GOLD NUGGET AWARD
"INTERNATIONAL COMMERCIAL/RETAIL PROJECT"
2008 GOLD NUGGET AWARD
"INTERNATIONAL RESIDENTIAL PROJECT-ATTACHED"

AMENITIES 25-METER HEATED INDOOR SWIMMING POOL
EXTENSIVELY-EQUIPPED GYMNASIUM
STEAM AND SAUNA FACILITIES
BADMINTON COURT, SQUASH COURT
SNOOKER LOUNGE, TABLE TENNIS ROOM
OUTDOOR GARDEN TERRACES
GOLF SIMULATOR, DANCE & AEROBICS ROOM