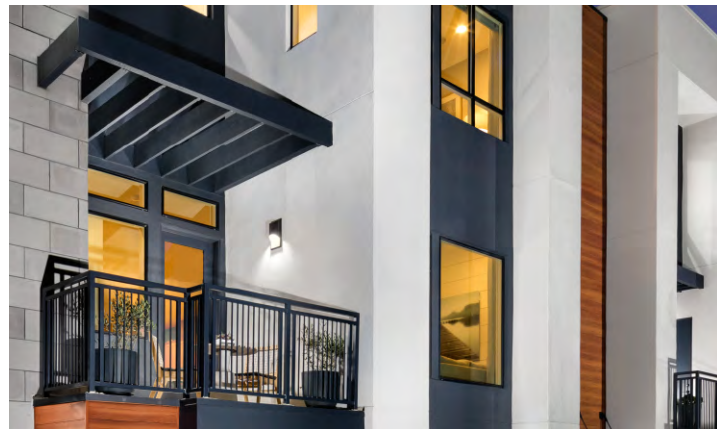
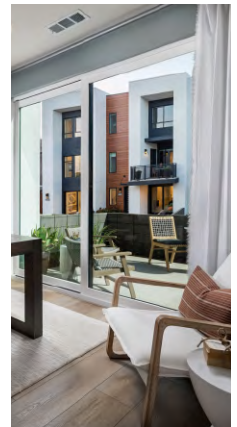


LOCATION TUSTIN, CALIFORNIA
CLIENT BROOKFIELD RESIDENTIAL

TUSTIN LEGACY TRIPLEX



PROJECT TYPE TOWNHOMES
SIZE 117 TOWNHOMES
1,965SF-2,295SF
DENSITY 15.7 DU/AC
(BLENDED DENSITY ACROSS
MULTIPLE PRODUCTS ON SITE)

Jzmk partners has designed 117 market-rate townhomes to be built in the Tustin Legacy community in Tustin California. The contemporary 3-story townhomes range from 1,965 to 2,295 Square foot and feature generous open floor plans.